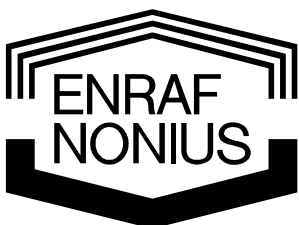


EN-Dynamic 1/6 Squat

Installation Instructions



Copyright: & Exclusive Sales and Service:



Enraf-Nonius B.V.
P.O. Box 12080
3004 GB ROTTERDAM
The Netherlands
Tel: +31 (0)10 – 20 30 600
Fax: +31 (0)10 – 20 30 699
info@enraf-nonius.nl
www.enraf-nonius.com

Part number: 1412792-40
1st edition, July 2006

TABLE OF CONTENTS

1 Introduction..... 1

1.1 General information..... 1

1.2 Required tools 1

2 Dismantling the foot-plateau..... 1

3 Dismantling the chair 2

4 Dismantling the frame and the control box 4

5 Assembly..... 5

6 Final check..... 6





1 Introduction

This mounting instruction is meant for the EN-Dynamic Squat (1/6) unit. For transportation or placement of the extremely heavy unit the instructions provided can help you to mount / dismantle the unit without the danger of damaging the unit. Please follow the instructions carefully. In case of any question please contact your local Enraf-Nonius service organization.

1.1 General information

1. Time requirement to dismantle – assemble – test the unit is approximately 2 hours
2. Weight foot platform 35 kg
3. Weight chair and guides 103 kg
4. Weight frame 110 kg
5. Total weight 248 kg

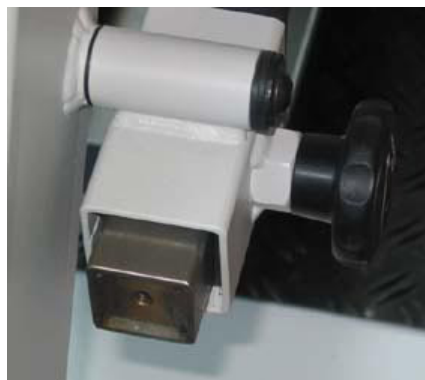
1.2 Required tools

1. Set of hexagonal wrenches (Allen keys)
2. Centerpons with a diameter of 10 mm
3. Heavy mounting hammer
4. Iron wire
5. Set of open-end wrenches
6. Cutting-pliers
7. Tie wraps
8. Fixation bands
9. Blankets

2 Dismantling the foot-plateau

Step 1a

Remove the end-stop



Step 2a

Remove the fixation knob.

NOTE: when removing the knob be assured that the foot platform does not rotate



Step 3a

Remove the hinge-pin

NOTE: properly support the foot plateau (weight of 35 kg!)



3 Dismantling the chair

Step 1b

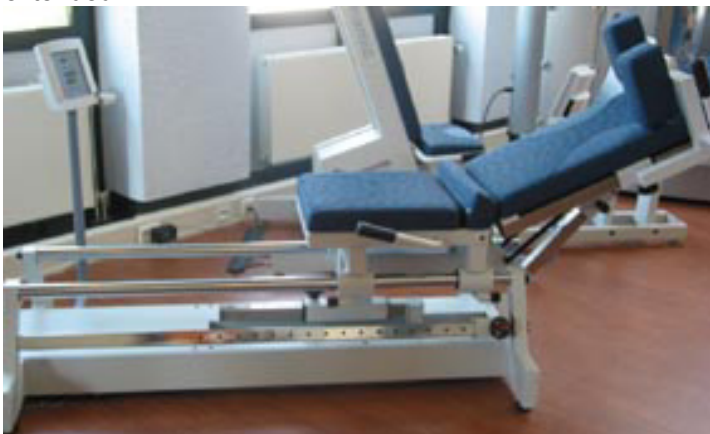
Remove the foot support

Unscrew both bolts that fix the foot support to the tube.



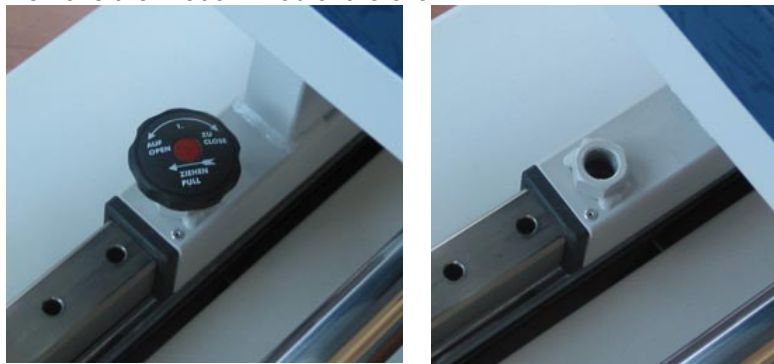
Step 2b

Place the chair in the backward position as indicated in the picture below. The cylinder should remain extended.



Step 3b

Remove the fixation knob of the chair



Step 4b

Remove the connection between the chair and the pneumatic cylinder

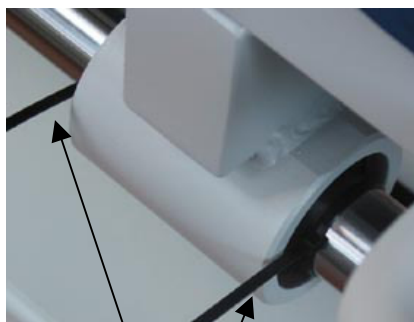
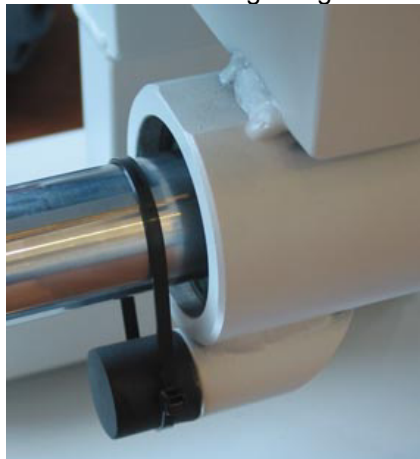
Move the chair forwards and slide the tube from the collar.

This will result in the following situation.



Step 5b

Fixation of the chair guiding rods.



tie wrap 2x

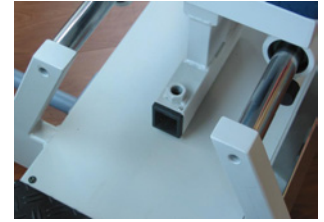
Step 6b

Unscrew the bolts of the ROM-rod but do not remove them (in case present, not standard on every unit).



Step 7b

Remove the bolts from the chair guides



Step 8b

Remove the chair with 4 persons (weight 103 kg!!)



4 Dismantling the frame and the control box

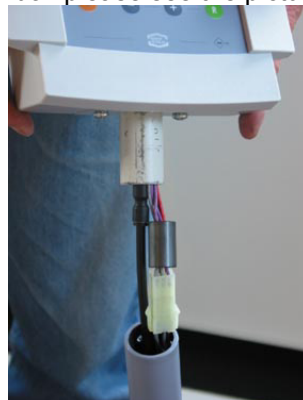
Step 1c

Fixation of the frame and the pneumatic cylinder (weight 110 kg) as indicated in the pictures. Do not forget the protective blankets.



Step 2c

For dismantling the control box please see the pictures.



Ready for transportation!



5 Assembly

Step 1d

Replace the chair with its guiding rods. Place the fixation bolts but do not yet tighten them.

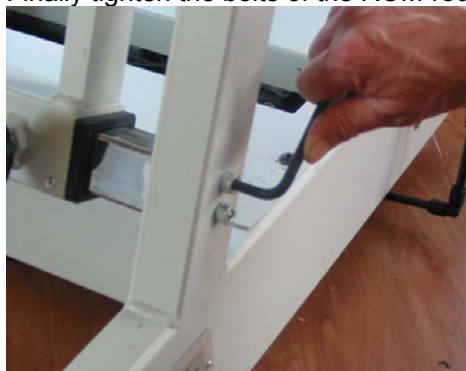
Move the chair to the rear-end. Now tighten the bolts at the rear end.

Then move the chair to the front end and then tighten the front-end bolts.

NOTE: when removing the tie-wraps be careful not to damage the guiding rods.

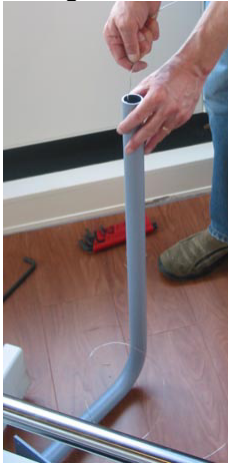


Finally tighten the bolts of the ROM-rod



Step 2d

Mounting the control box. Insert a piece of iron wire in the tube in order to pull the air hose and the cables through the tube.



Step 3d

Mounting the foot-plateau is in the reverse order as described in the dismantling section

6 Final check

After assembly please check the following items:

1. All movable parts should move easy and without noise.
2. Check for air leakage
3. Check the adjustment of the foot-plateau
4. Check the smooth movement of the chair
5. Check if the control box functions and if it is placed in the right position
6. Check if all bolt-covers are placed

